

INTERIOR

# UMBRA

SHADOWS BLEND WITH FADING LIGHT,  
BOLD AND DEEP THE EDGE OF NIGHT.



MUROVERO  
LUXURY THAT LASTS



# TABLE OF CONTENTS

ABOUT US	02
CREDENTIALS	02
WOOD GRAIN SERIES	03
METAL SERIES	06
MONOCHROME SCRATCH-RESISTANT	08
WALL CLOTH SERIES	10
MIRROR SERIES	13
LEATHER PATTERN SERIES	14
ROCK PATTERN SERIES	15

IN THIS MUOVERO E-CATALOGUE, DISCOVER  
CURATED CLADDING OPTIONS TO ENHANCE  
YOUR INTERIORS. BROWSE ELEGANT MATERIALS  
AND FIND INSPIRATION FOR UNIQUE,  
SOPHISTICATED SPACES





# ABOUT US

Murovero began with a clear purpose: to close the gap in Australia's cladding market. Safe, compliant options were available, but they often compromised aesthetics, leaving builders, architects, and homeowners choosing between fire safety and design.

We set out to change that. Every Murovero cladding solution is certified to Australian Standards and tested for fire compliance internationally, while remaining design-led, visually refined, and built for long-term performance.

Our promise is simple:  
**LUXURY THAT LASTS!**

# CREDENTIALS

To ensure ongoing compliance, Murovero maintains strict quality control at every stage:

- Batch traceability & factory inspections to guarantee consistency.
- Third-party audits by accredited Australian testing bodies.
- Periodic re-testing to ensure continued conformity.



## MISSION

We deliver bespoke, design-led cladding; certified to Australian Standards so that builders, architects, and installers can transform everyday spaces into exceptional, enduring places that inspire creativity and connection.



## VISION

We will be Australia's benchmark cladding brand; setting the standard in compliance, innovation, and design shaping an environment where ideas are realised with intention, elegance, and enduring impact



## VALUE

We uphold uncompromising safety and purposeful design while pursuing excellence from specification to installation and delivering sustainable cladding solutions built to endure and elevate spaces for generations.





# WOOD GRAIN SERIES



**CEDAR DUNE - WOOD GRAIN - 7006**



**HONEY RIFT - WOOD GRAIN - 7007**



**BIRCH CALM - WOOD GRAIN - 7008**



**WALNUT SHADE - WOOD GRAIN - 7009**



**MAPLE HAZE - WOOD GRAIN - 7010**

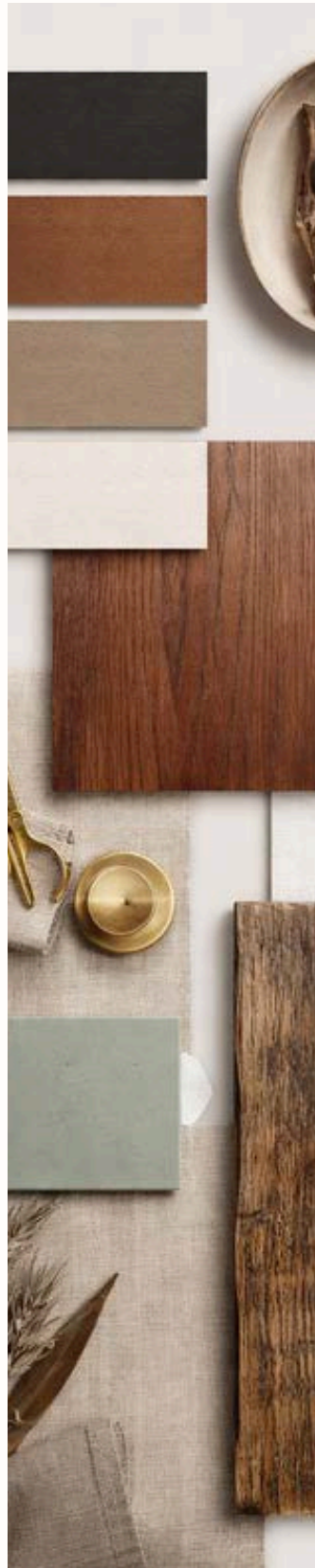
## PROFILE

Dimensions	Thickness
1220 x 2440 mm	5 mm
1220 x 2600 mm	8 mm
1220 x 2800 mm	
1220 x 2900 mm	
1220 x 3000 mm	

Embrace dramatic elegance with Umbra. These contemporary panels enrich facades and interiors with deep, shadowy tones while minimising heat gain and glare. Umbra's lightweight engineered system adds insulation, lowers energy costs, and offers versatile installation over multiple substrates. Designed for both expression and efficiency, Umbra provides a unique blend of thermal comfort, bold finishes, and enduring performance.



*Wood Grains Eries captures the quiet poetry of nature etched into timber. Flowing lines and organic textures trace the passage of time—each grain a subtle rhythm shaped by growth, weather, and patience.*



**OAK WHISPER - WOOD GRAIN - 7011**



**BEECH SMOKE - WOOD GRAIN - 7014**



**UMBER FLOW - WOOD GRAIN - 7028**



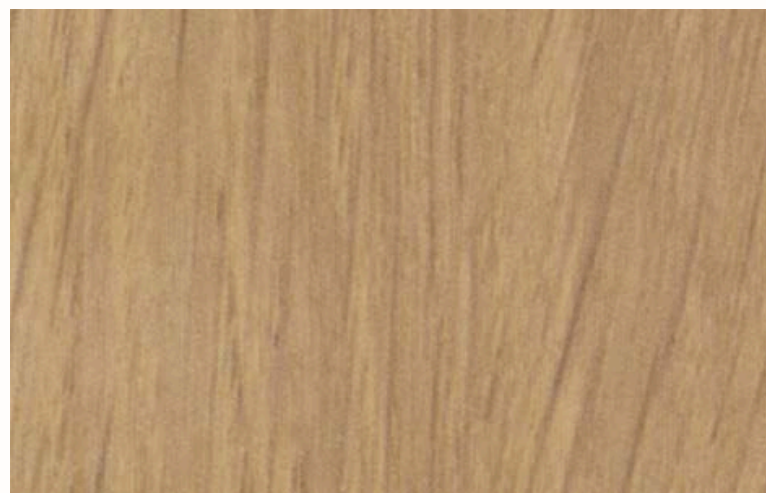
**SANDAL GRAIN - WOOD GRAIN - 7012**



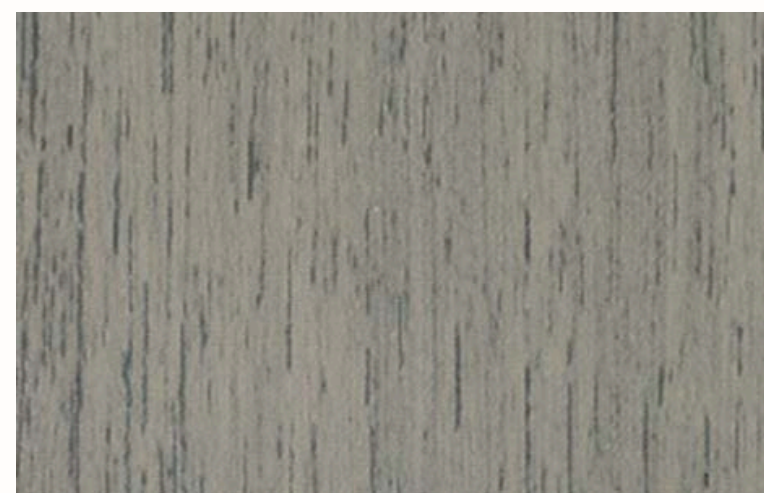
**COCOA NOIR - WOOD GRAIN - 7026**



**GRAPHITE VEIN - WOOD GRAIN - 7029**



**ALMOND TIDE - WOOD GRAIN - 7013**



**SLATE DRIFT - WOOD GRAIN - 7027**



**IRON LOOM - WOOD GRAIN - 7030**

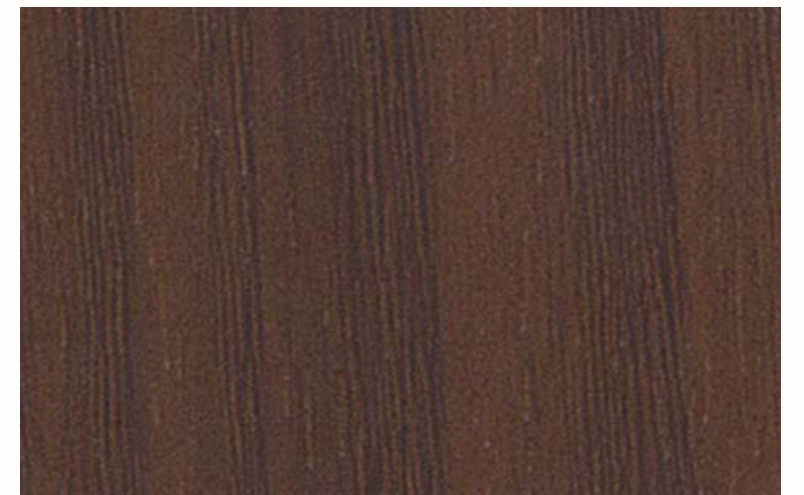


Wood grain remembers  
rings of slow summers,  
tight winters held fast.  
Each line a quiet journey,

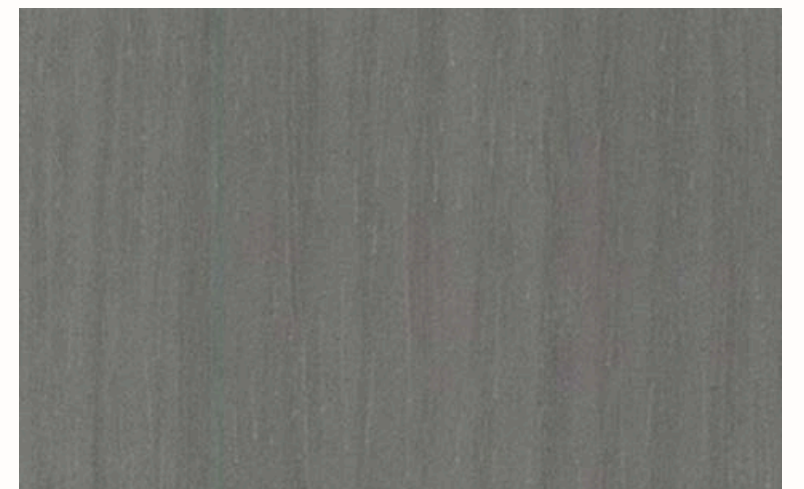
warm with touch,  
familiar as a heartbeat—  
nature's handwriting,  
still speaking in the room.



**TAUPE FIBER - WOOD GRAIN - 7032**



**FOSSIL THREAD - WOOD GRAIN - 7055**



**BASALT WEFT - WOOD GRAIN - 7056**



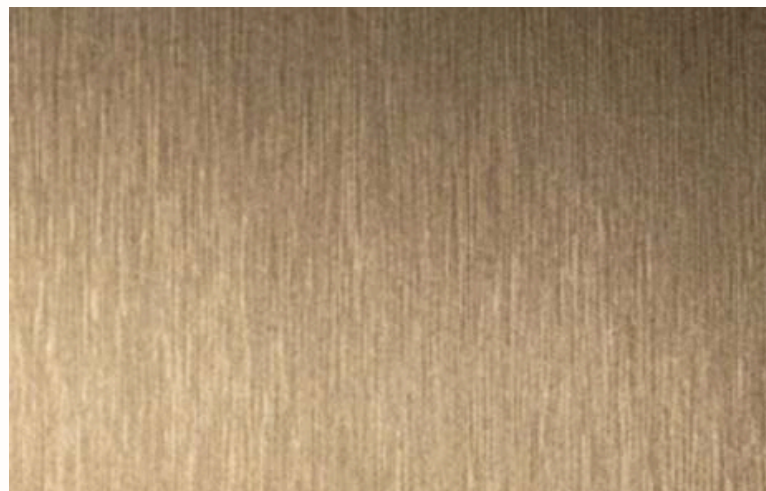
# METAL SERIES

## PROFILE

Dimensions	Thickness
1220 x 2440 mm	5 mm
1220 x 2600 mm	8 mm
1220 x 2800 mm	
1220 x 2900 mm	
1220 x 3000 mm	



**CHAMPAGNE MIST - METAL - 9014**

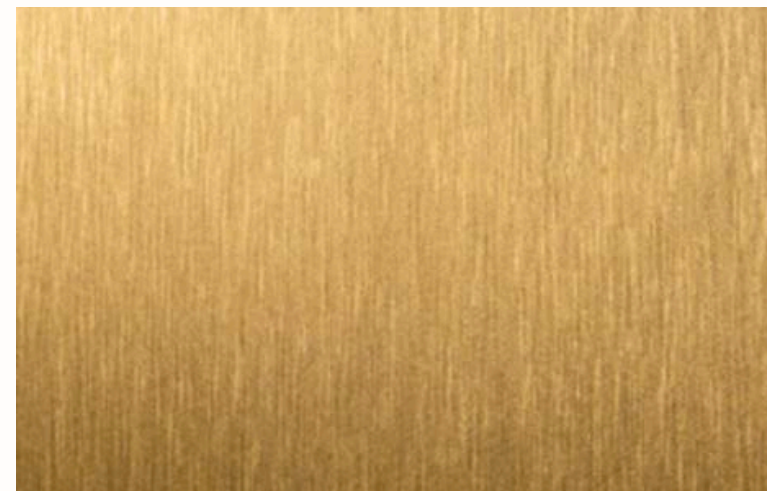


**SMOKED STONE - METAL - 9015**

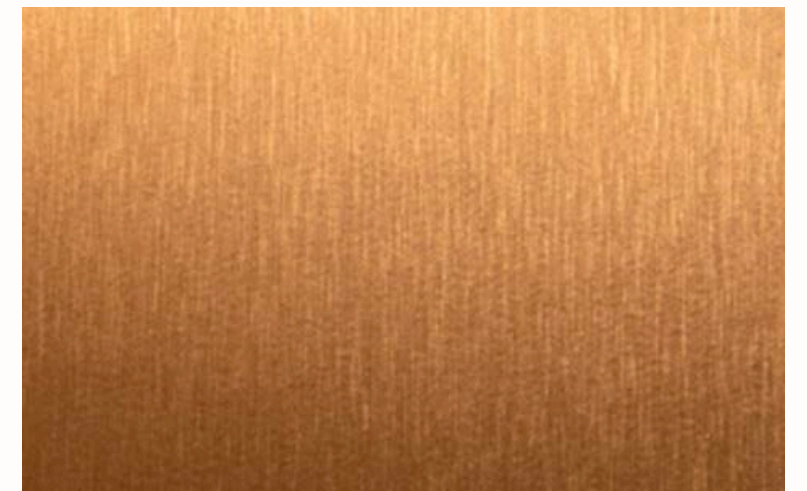


**SATIN SILVER - METAL - 9019**

Embrace refined strength with the Metal Series. These sleek, precision-engineered panels bring a contemporary edge to facades and interiors through clean lines and sophisticated metallic finishes. Designed for durability and performance, the Metal Series enhances thermal efficiency, resists weathering, and supports versatile installation across a range of substrates.



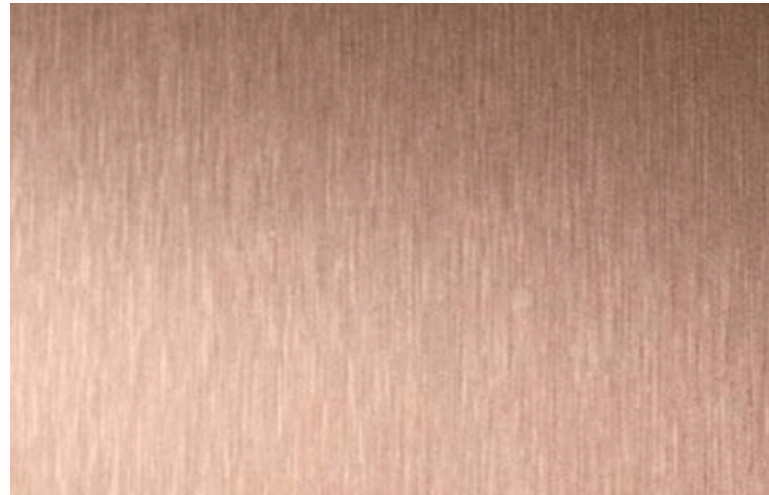
**ROYAL GOLD - METAL - 9020**



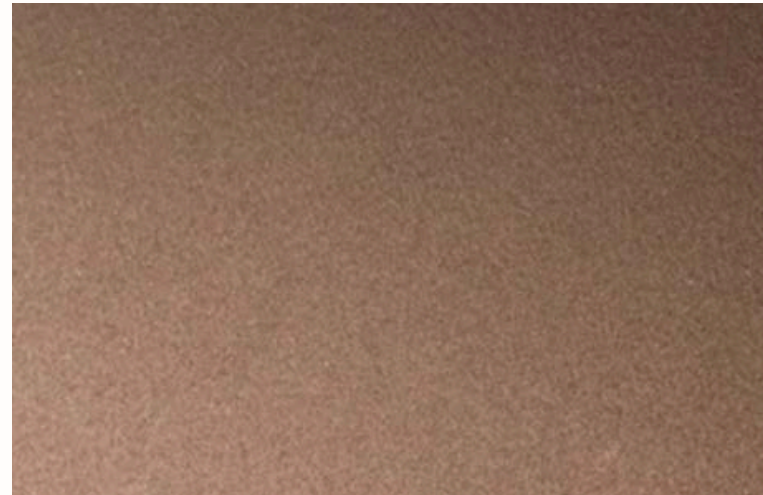
**AMBER GLOW - METAL - 9021**



*Metal holds the light—  
cool, deliberate, enduring.  
It echoes industry and sky,  
shaped by fire, refined by time.*



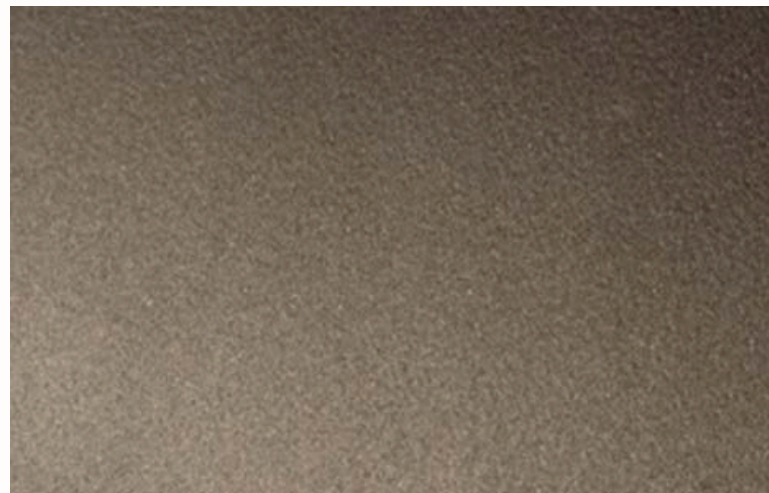
**ROSE VEIL - METAL - 9022**



**COCOA BRONZE - METAL - 9026**



**SHADOWED PLATINUM - METAL - PET-08**



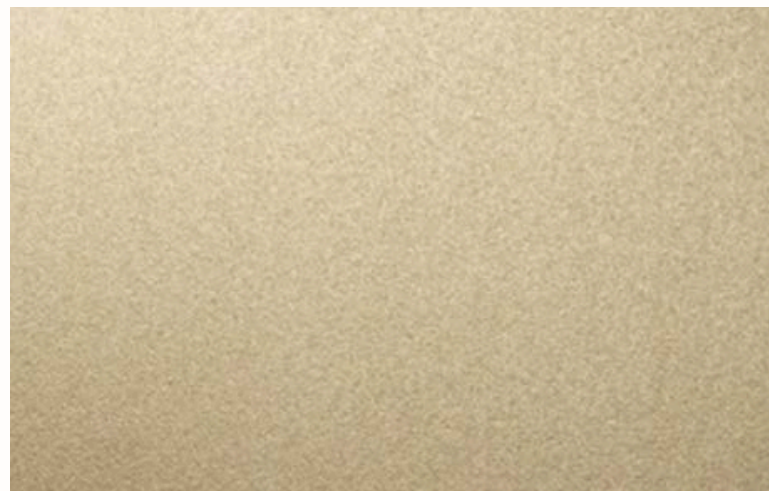
**BRASS DUNE - METAL - 9024**



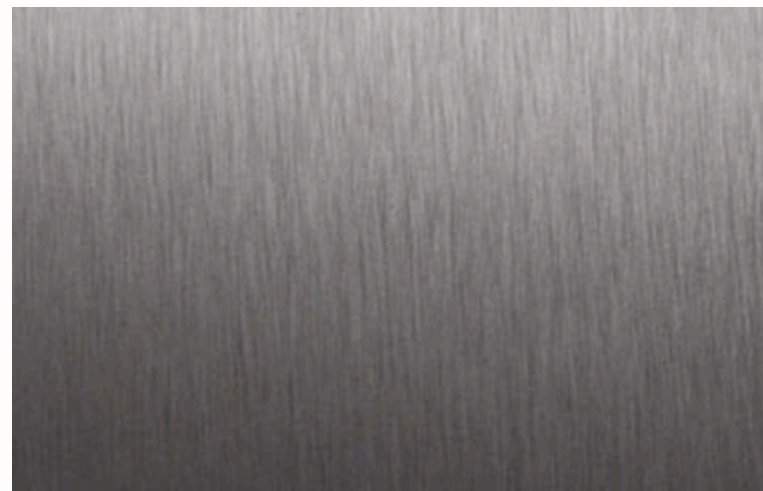
**GRAPHITE MOONLIGHT - METAL - PET-05**



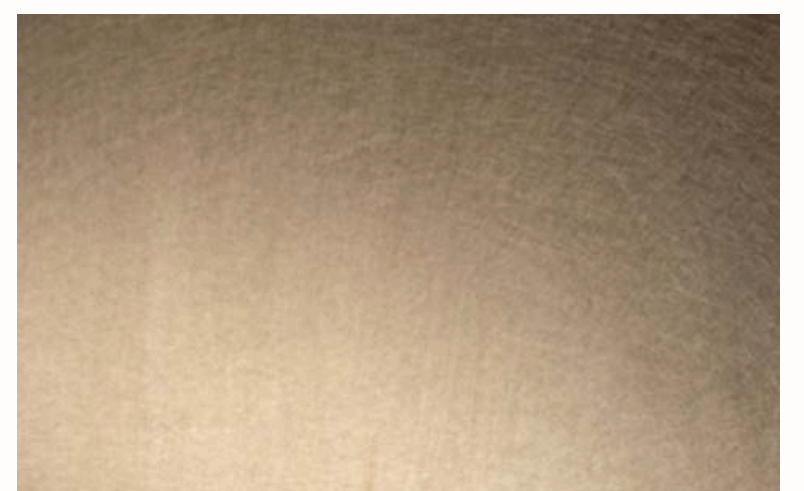
**ARCTIC SILVER - METAL - PET-16**



**SAND ALLOY - METAL - 9025**



**FROSTLINE STEEL - METAL - PET-06**



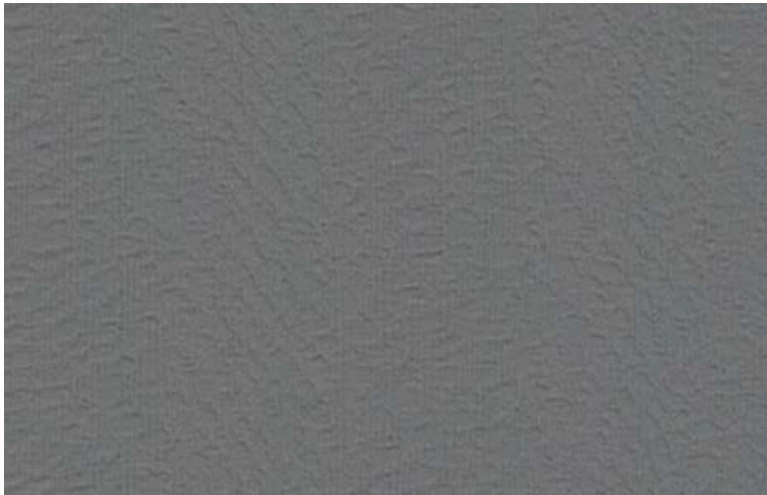
**HALO GOLD - METAL - PET-17**



# MONOCHROME SCRATCH-RESISTANT SERIES



ALPINE WHITE - MONO - 1001



CHALKSTONE WHISPER - MONO - 1004



NORDIC GREY - MONO - 1008



IVORY CLOUDVEIL - MONO - 1002



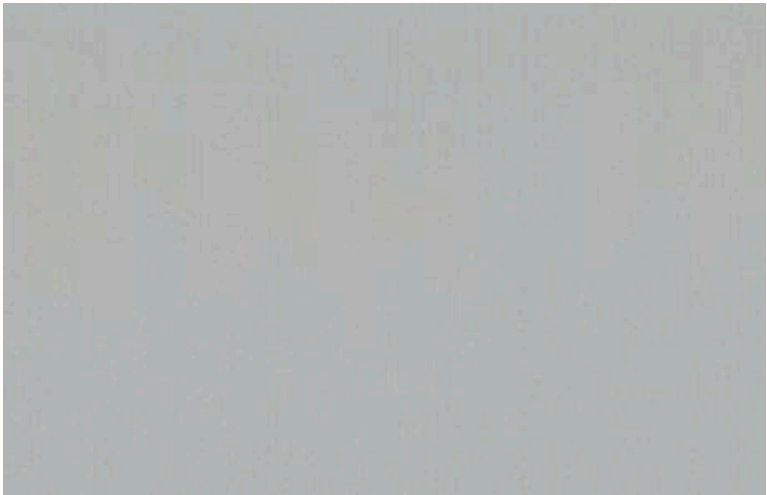
MIST GREY - MONO - 1006



DRIFTSTONE BEIGE - MONO - 1009



PEARL SOFT - MONO - 1003



ENGLISH GREY - MONO - 1007



OPALINE FROST - MONO - 1013

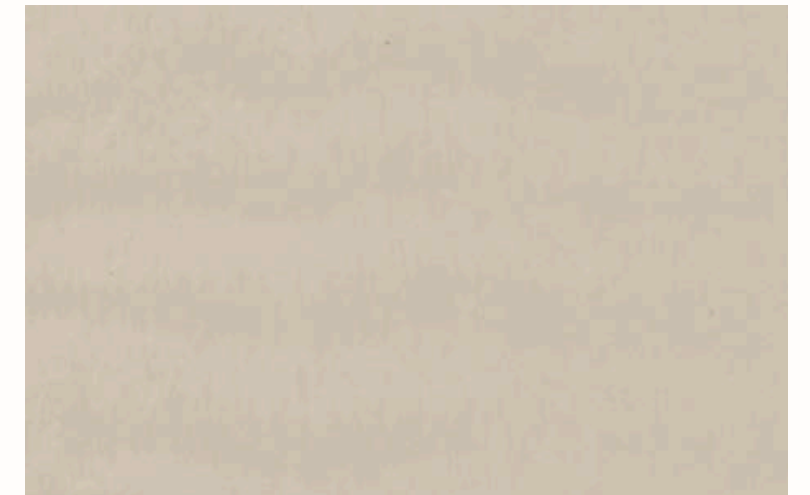
## PROFILE

Dimensions	Thickness
1220 x 2440 mm	5 mm
1220 x 2600 mm	8 mm
1220 x 2800 mm	
1220 x 2900 mm	
1220 x 3000 mm	

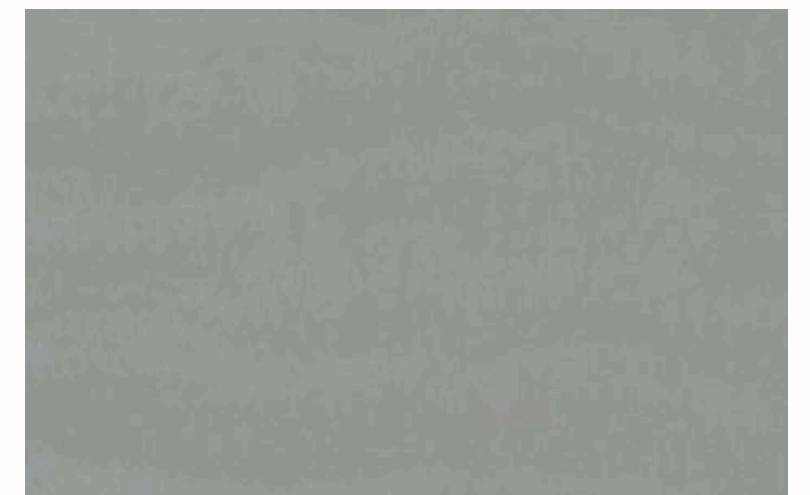
Embrace understated sophistication with the Monochrome Scratch-Resistant Veneer Series. These refined wall panels elevate interiors with timeless black-and-white tones and a smooth, resilient surface designed to withstand everyday wear. Engineered for durability and ease of installation, the series delivers long-lasting performance across a variety of substrates while maintaining a sleek, contemporary aesthetic. Balancing practicality with elegance, Monochrome offers a calm, modern finish built for enduring beauty and daily use.



*Crisp blacks and soft whites create a quiet dialogue of contrast and balance, where light and shadow move effortlessly across smooth, resilient surfaces. Beneath its refined simplicity lies strength—engineered to resist wear while preserving a flawless appearance.*



**VANILLA DUNE - MONO - 1014**



**SAGE HAZE - MONO - 1015**



**BURNT CLAY - MONO - 1016**



# WALL CLOTH SERIES



VAPOR GAUZE - WC - 6001



PEBBLE TWILL - WC - 6002



CLOUD SATEEN - WC - 6005



QUARRY FABRIC - WC - 6006



OYSTER THREAD - WC - 6008

## PROFILE

Dimensions	Thickness
1220 x 2440 mm	5 mm
1220 x 2600 mm	8 mm
1220 x 2800 mm	
1220 x 2900 mm	
1220 x 3000 mm	

Embrace soft sophistication with the Lightweight and thoughtfully engineered, the system supports flexible installation across multiple substrates while adding a layer of comfort and elegance to any space. Designed for tactile appeal and lasting performance, Wall Cloth Veneer delivers a harmonious balance of comfort, style, and contemporary refinement.



*Cloth listens to the light,  
softening edges,  
holding warmth in its weave.*



**PUMICE CLOTH - WC - 6009**



**SILVER STRATA - WC - 6012**



**ASH TEXTILE - WC - 6018**



**ASHEN CANVAS - WC - 6010**



**NIMBUS TICKING - WC - 6015**



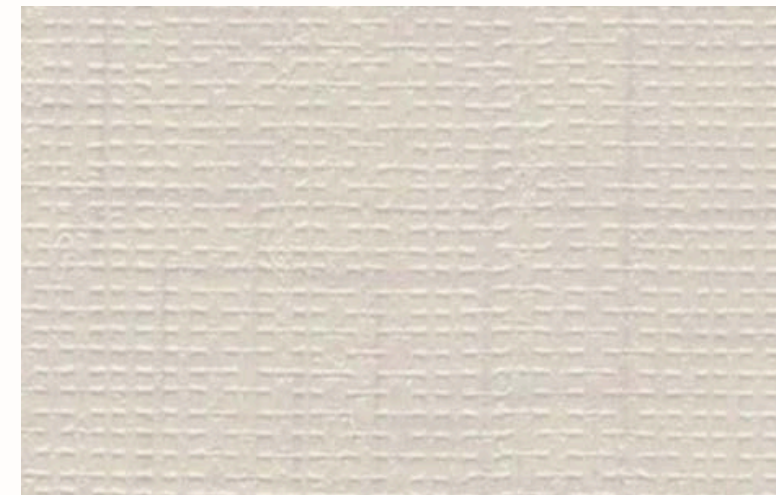
**CLOUD FABRIC - WC - 6019**



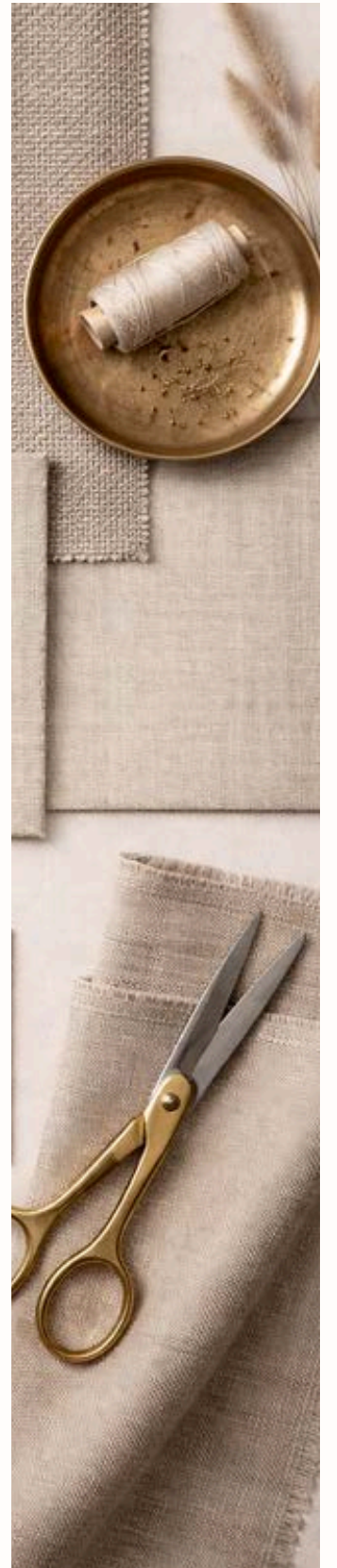
**DUNE CALICO - WC - 6011**



**COTTON MIST - WC - 6016**



**STONE WEAVE - WC - P65**

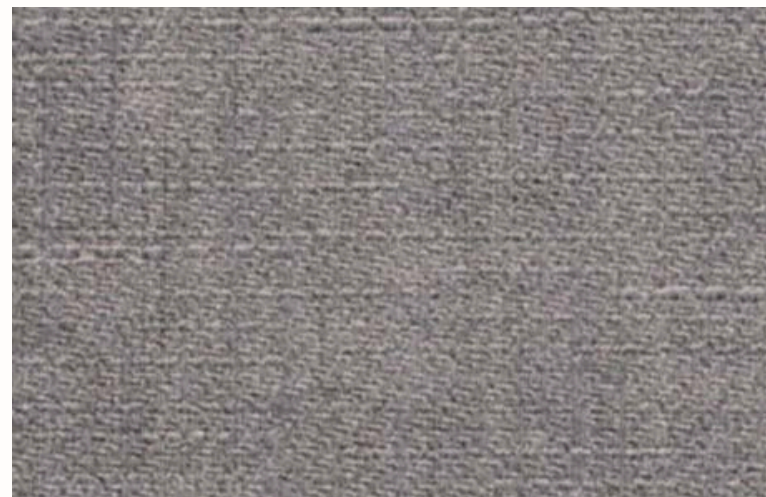




*Threads cross like quiet thoughts,  
turning space into shelter—  
a gentle pause  
you can feel before you touch.*



**IVORY GRID - WC - P68**



**SOFT FLAX - WC - P70**



**WOVEN SAND - WC - P71**



**CANVAS SNOW - WC - P74**



**SILK FROST - WC - P76**



**LINEN PEARL - WC - P78**



# MIRROR SERIES

## PROFILE

Dimensions	Thickness
1220 x 2440 mm	5 mm
1220 x 2600 mm	8 mm
1220 x 2800 mm	
1220 x 2900 mm	
1220 x 3000 mm	



**MIRROR - BLACK**



**MIRROR - SILVER**

Embrace luminous elegance with the Mirror Veneer Wall Panel Series. These reflective panels enhance interiors with depth, brightness, and a sense of expanded space, amplifying natural and artificial light. Engineered for precision and durability, the lightweight system allows versatile installation across multiple substrates while maintaining a flawless, high-end finish. Designed to balance visual impact with practical performance, Mirror Veneer delivers refined sophistication, spatial clarity, and enduring appeal.

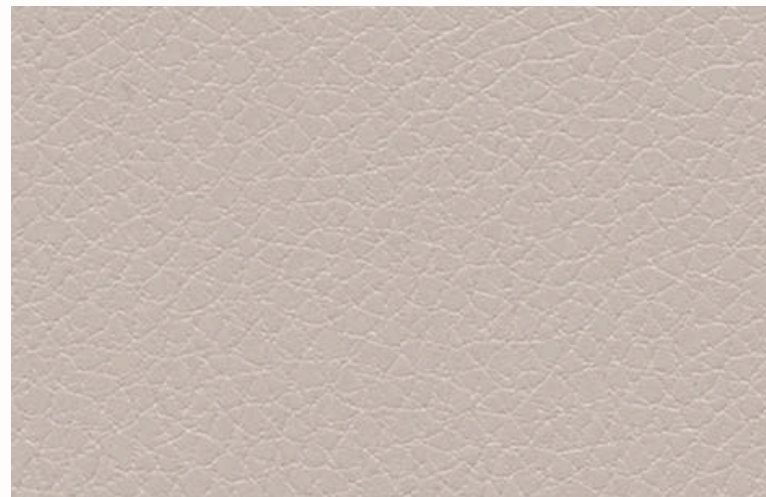




# LEATHER PATTERN SERIES



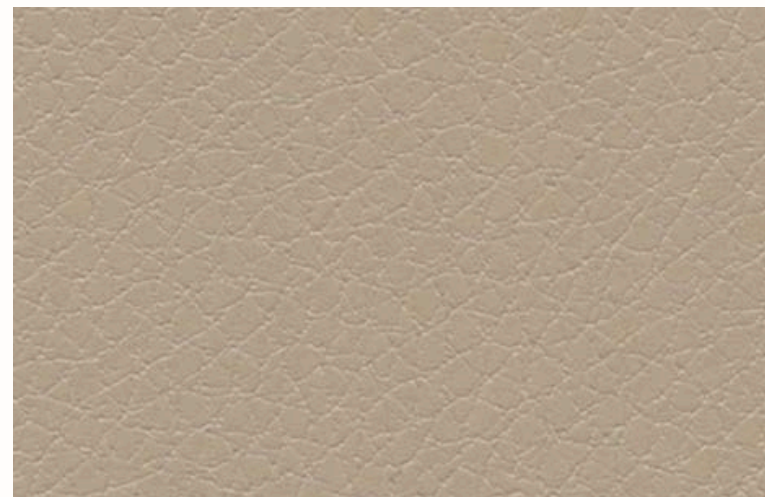
**ARCTIC PEARL - LP - 5001**



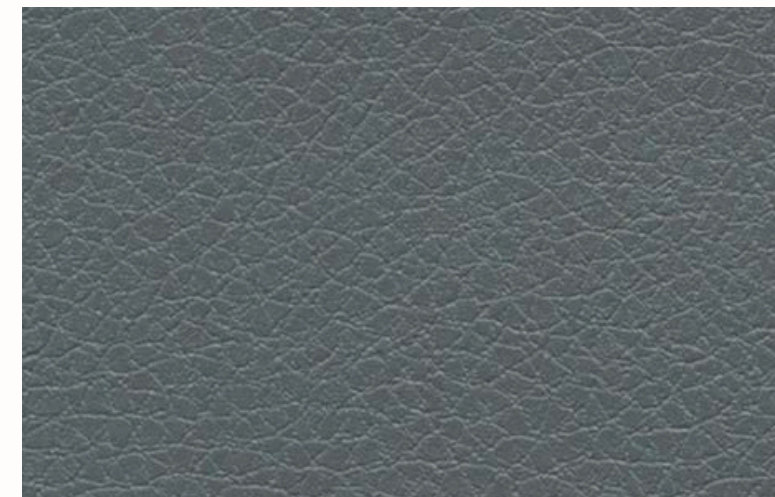
**CHAMPAGNE SAND - LP - 5002**

*Leather remembers pressure and time,  
a surface shaped by touch.  
Grain settles into quiet strength,  
soft yet assured.*

*It holds warmth without yielding,  
luxury whispered, not shown—  
a pattern of patience,  
worn into grace.*



**CHATEAU TAUPE - LP - 5003**



**MIDNIGHT HARBOUR - LP - 5004**

## PROFILE

Dimensions	Thickness
1220 x 2440 mm	5 mm
1220 x 2600 mm	8 mm
1220 x 2800 mm	
1220 x 2900 mm	
1220 x 3000 mm	

These richly textured panels capture the refined character of leather, adding depth, warmth, and a sense of craftsmanship to interior spaces. Engineered for durability and ease of installation, the lightweight system installs seamlessly across multiple substrates while maintaining a premium, resilient finish. Designed for both visual richness and everyday performance, Leather Pattern Veneer delivers timeless elegance with modern practicality.



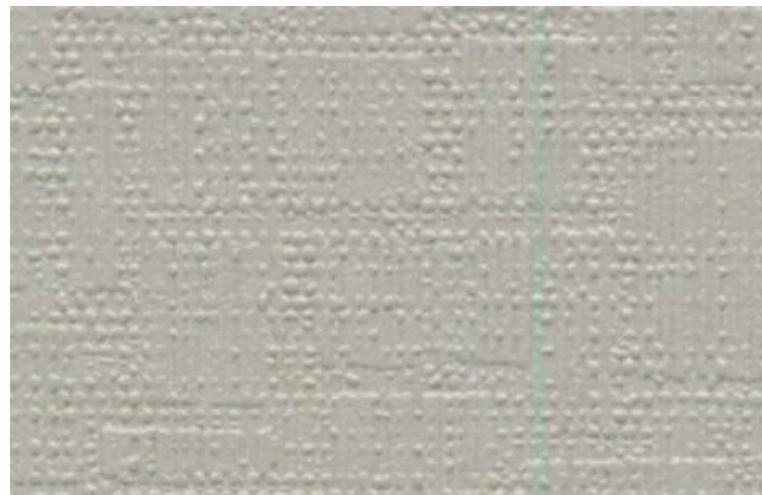
# ROCK PATTERN SERIES

## PROFILE

Dimensions	Thickness
1220 x 2440 mm	5 mm
1220 x 2600 mm	8 mm
1220 x 2800 mm	
1220 x 2900 mm	
1220 x 3000 mm	



**PORCELAIN MIST - RP - 3012**

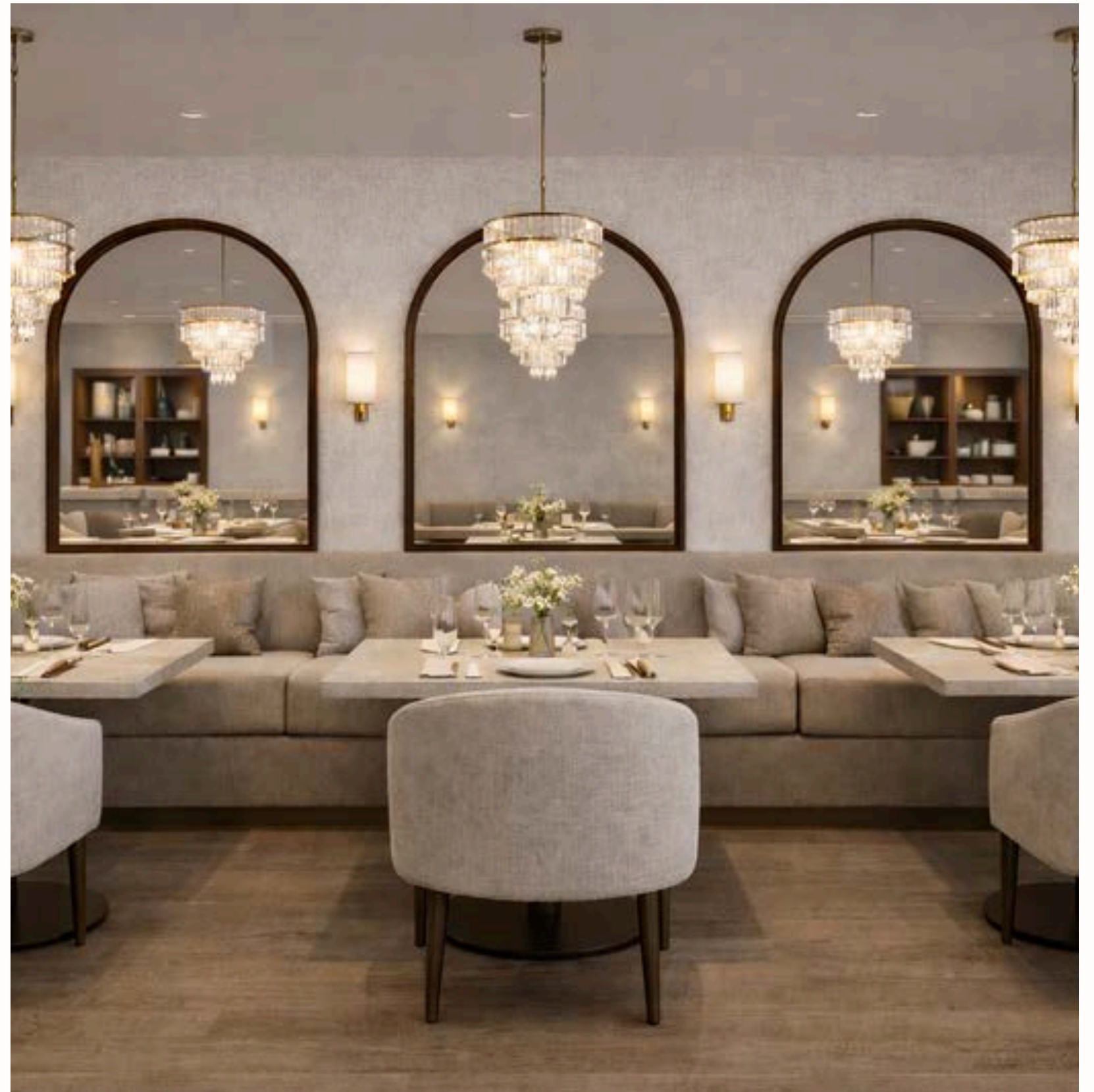


**IVORY WEAVE - RP - 3014**



**LIMESTONE VEIL - RP - 3015**

These textured panels echo the raw beauty of stone, bringing depth, character, and architectural presence to interiors and facades. Lightweight and expertly engineered, the system allows flexible installation across multiple substrates while delivering durability and long-term performance. Balancing rugged aesthetics with refined design, Rock Pattern Veneer offers a bold, grounded finish built to endure.



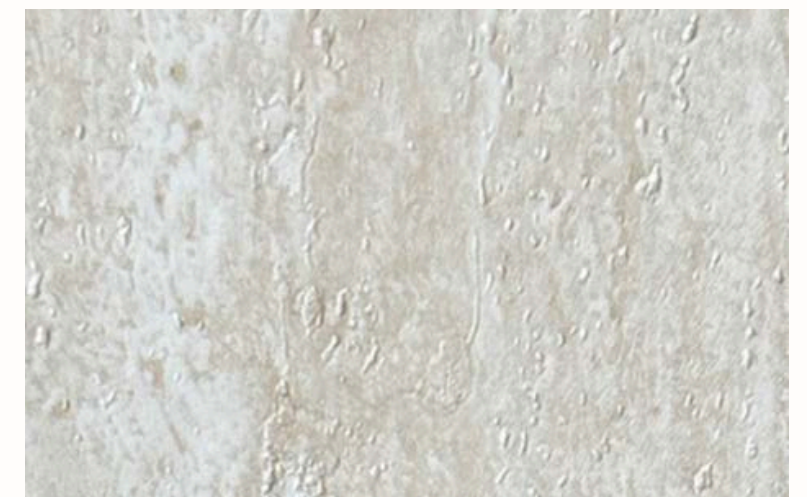


*Rock keeps its silence,  
layered with ages and weight.  
Edges hold the memory of force,  
time pressed into form.*

*Still and unyielding,  
it anchors the world—  
strength made visible,  
beauty carved by endurance.*



**CHALK FROST - RP - 3016**



**TRAVERTINE MIST - RP - 3017**



**LINEN GLACIER - RP - 3018**





## CONTACT

[admin@murovero.com.au](mailto:admin@murovero.com.au)  
[+61473453367](tel:+61473453367)  
[www.murovero.com.au](http://www.murovero.com.au)